

TOG-VALUE

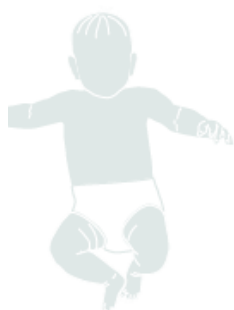
CHOICE OF SLEEPING BAGS AND SLEEPING CLOTHES

Based on the TOG-values and this list, according to DIN EN 1678: 2013, the right combination of sleeping clothes for a given room temperature can be estimated, so guaranteeing a comfortable sleeping climate.

WHAT IS A TOG-VALUE?

TOG is a measurement for estimating the thermal resistance of textiles, where by one TOG equals 0,1 square m K/W. The larger the TOG value the warmer keeps the sleeping bag.

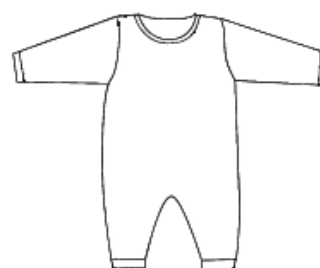
COMBINATIONS WITH BABY-MÄXCHEN & CO:



BODY WITH SHORT SLEEVES



BODY WITH LONG SLEEVES



PYJAMA



ALVI INNERBAG BIO-COTTON

TOG-value	Item	24°C-27°C	22°C-24°C	20°C-22°C	18°C-20°C	16°C-18°C	13°C-16°C
0,5	INNERBAG						
	C2C-MÄXCHEN®						
	SOMMERTRAUM						
	MUSLIN-SLEEPING BAG						
	MÄXCHEN LIGHT JERSEY						
	BALL-SHAPED SLEEPING BAG MOLTON						
	TRACKSUIT JERSEY						
	SLEEP-OVERALL LIGHT						

TOG-Value	Item	24°C-27°C	22°C-24°C	20°C-22°C	18°C-20°C	16°C-18°C	13°C-16°C
1,0	MÄXCHEN LIGHT QUILT						
	TRACKSUIT QUILT						
	TRACKSUIT FELPA NAP						
	SLEEP-OVERALL QUILT						
	SLEEP OVERALL FELPA NAP						
2,0	4-SEASON MUSLIN-SLEEPING BAG						
	4-SEASON SLEEP-OVERALL						
	SWADDLING-MÄXCHEN®						
2,5	BABY-MÄXCHEN® OUTER BAG JERSEY						
	BALL-SHAPED SLEEPING BAG THERMAL						
	SLEEP-OVERALL						
3,0	SLEEP-OVERALL VELVET						
	BABY-MÄXCHEN® OUTER BAG COTTON (WOVEN)						
	BABY-MÄXCHEN® OUTER BAG QUILT						
	MÄXCHEN THERMAL						
	MÄXCHEN THERMAL WITH SLEEVES						
3,5	BABY-MÄXCHEN® OUTER BAG PIQUÉ						